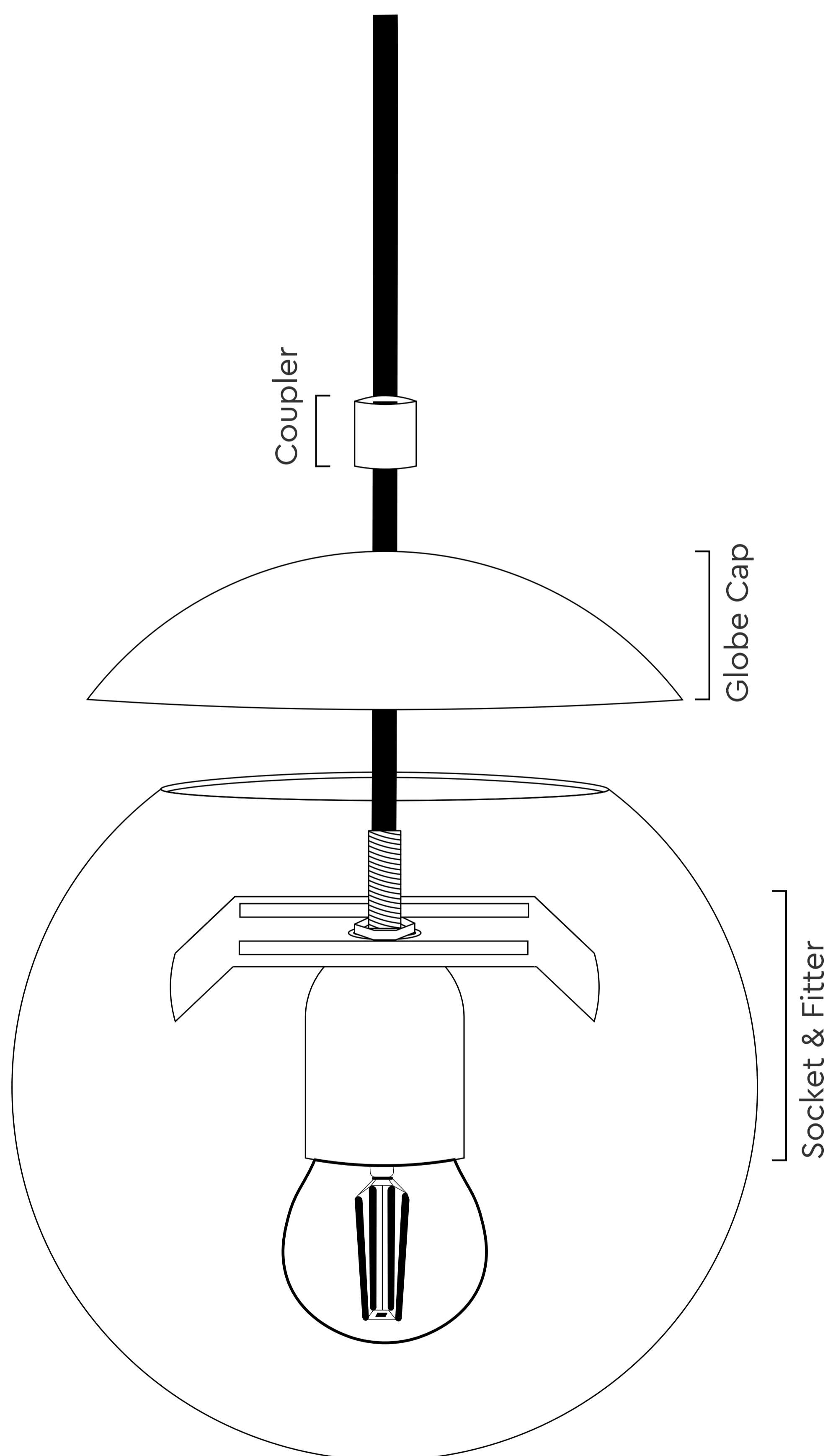


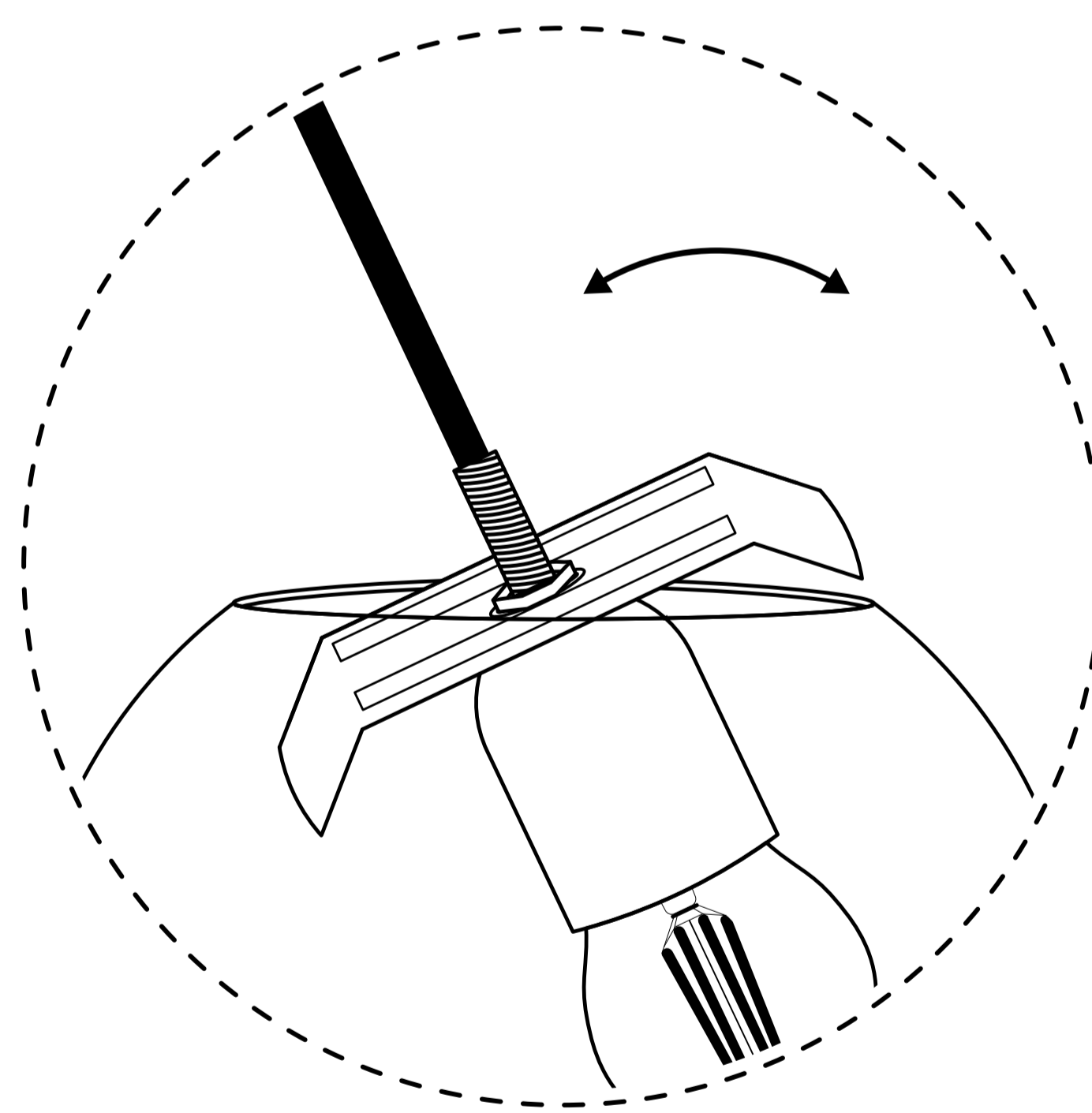
# MOD GLOBE

## EXPANDED VIEW INSTALLATION GUIDE



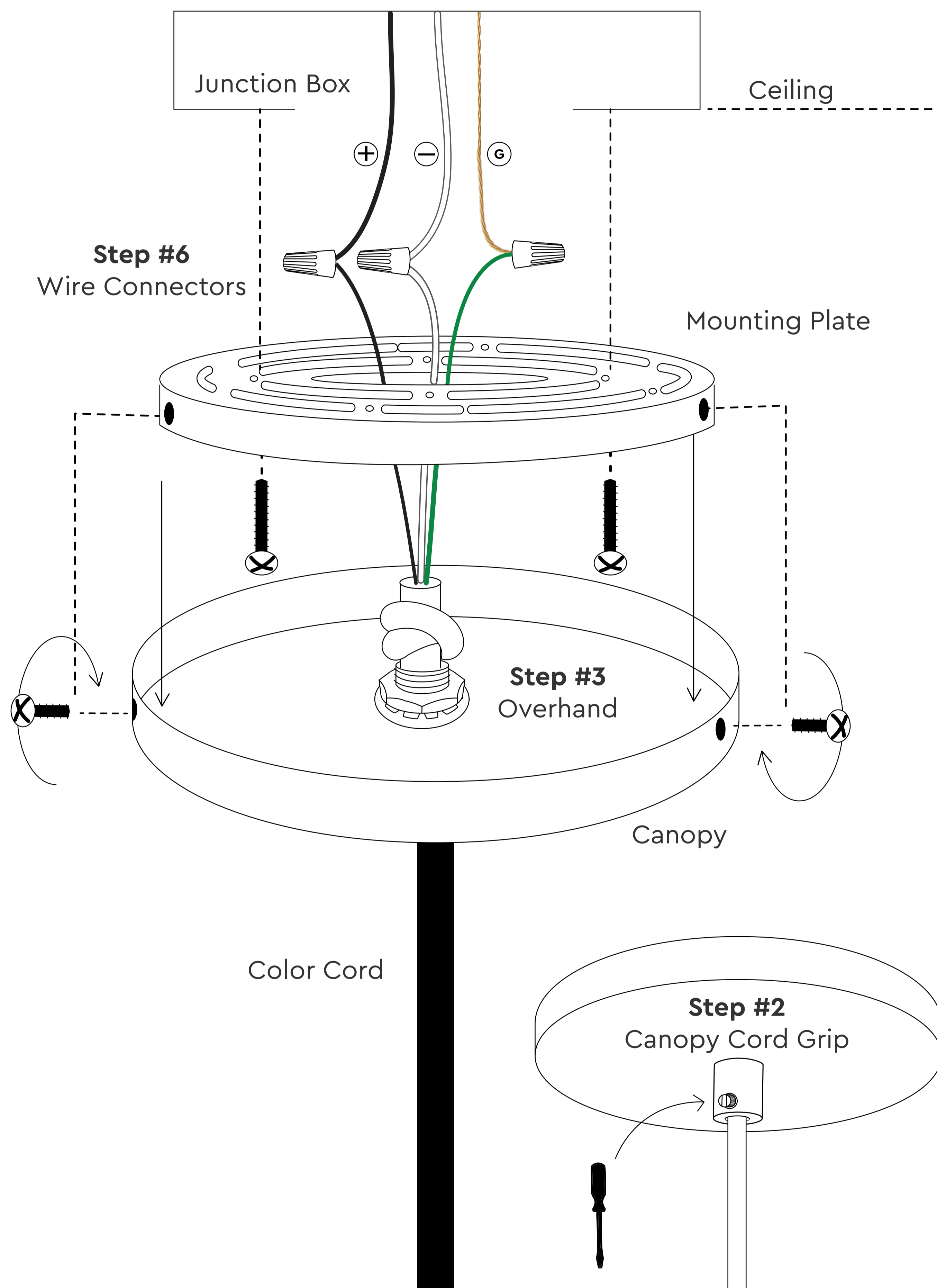
### To install or replace the lightbulb or glass:

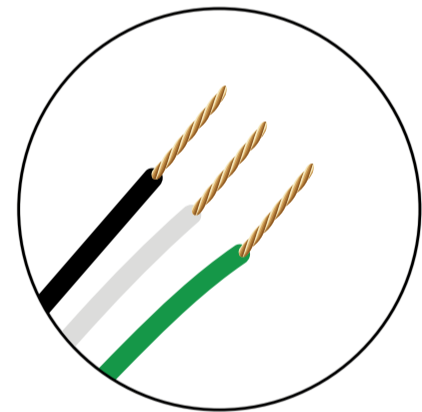
- 1.** Add preferred light bulb.
- 2.** Unscrew the coupler and lift the globe cap.
- 3.** While holding glass firmly, carefully lower the fitter and socket into the globe.



Need more info? Visit our guides page at [COLORCORD.COM/PAGES/GUIDES](https://colorcord.com/pages/guides)

# CANOPY INSTALLATION DIAGRAM



1. Turn off power circuit.
  2. Attach canopy grip to the canopy. Secure with lock washer and nut inside the canopy.
  3. Tie overhand knot inside the canopy.
  4. Locate the positive (black), negative (white) and ground (green or bare copper in the junction box) wires in the junction box and at the end of the cloth covered wire.
  5. Strip end of wires to expose the stranded copper wire.
- 
6. Connect matching wires with wire connectors and wrap secure with electrical tape.
  7. Secure mounting plate to ceiling.
  8. Secure canopy to mounting plate.
  9. Tighten the plastic set screw of the canopy cord grip firmly in to the color cord.

**WARNING**  
Turn off power at circuit before wiring and always consult a licensed electrician.

Need more info? Visit our guides page at [COLORCORD.COM/PAGES/GUIDES](https://colorcord.com/pages/guides)